



Title Plan - LT 486181

Survey Number LT 486181
Surveyor Reference 1520-135959-01 Lakes Stage 3AB
Surveyor Michael Peter Dewhirst
Survey Firm Harrison Grierson Consultants Ltd
Surveyor Declaration I Michael Peter Dewhirst, being a licensed cadastral surveyor, certify that:
(a) this dataset provided by me and its related survey are accurate, correct and in accordance with the Cadastral Survey Act 2002 and the Rules for Cadastral Survey 2010, and
(b) the survey was undertaken by me or under my personal direction.
Declared on 16 Jun 2015 10:18 AM

Survey Details

Dataset Description Lots 1-103, 107-147, 890, 903-904, 933-936, 966 & 1001 being a subdivision of Pt Lot 11 DP 364444 & Lot 2 DP 474511

Status Approved as to Survey

Land District South Auckland **Survey Class** Class A

Submitted Date 16/06/2015 **Survey Approval Date** 16/06/2015
Deposit Date

Territorial Authorities

Tauranga City

Comprised In

CT 651658
CT 261821

Created Parcels

Parcels	Parcel Intent	Area	CT Reference
Lot 1 Deposited Plan 486181	Fee Simple Title	0.0601 Ha	692598
Lot 2 Deposited Plan 486181	Fee Simple Title	0.0573 Ha	692599
Lot 3 Deposited Plan 486181	Fee Simple Title	0.0571 Ha	692600
Lot 4 Deposited Plan 486181	Fee Simple Title	0.0570 Ha	692601
Lot 5 Deposited Plan 486181	Fee Simple Title	0.0573 Ha	692602
Lot 6 Deposited Plan 486181	Fee Simple Title	0.0568 Ha	692603
Lot 7 Deposited Plan 486181	Fee Simple Title	0.0601 Ha	692604
Lot 8 Deposited Plan 486181	Fee Simple Title	0.0599 Ha	692605
Lot 9 Deposited Plan 486181	Fee Simple Title	0.0663 Ha	692606
Lot 10 Deposited Plan 486181	Fee Simple Title	0.0670 Ha	692607
Lot 11 Deposited Plan 486181	Fee Simple Title	0.0653 Ha	692608
Lot 12 Deposited Plan 486181	Fee Simple Title	0.0654 Ha	692609
Lot 13 Deposited Plan 486181	Fee Simple Title	0.0655 Ha	692610
Lot 14 Deposited Plan 486181	Fee Simple Title	0.0645 Ha	692611
Lot 15 Deposited Plan 486181	Fee Simple Title	0.0617 Ha	692612
Lot 16 Deposited Plan 486181	Fee Simple Title	0.0635 Ha	692613
Lot 17 Deposited Plan 486181	Fee Simple Title	0.0598 Ha	692614
Lot 18 Deposited Plan 486181	Fee Simple Title	0.0596 Ha	692615
Lot 19 Deposited Plan 486181	Fee Simple Title	0.0550 Ha	692616

Title Plan - LT 486181

Created Parcels

Parcels	Parcel Intent	Area	CT Reference
Lot 20 Deposited Plan 486181	Fee Simple Title	0.0550 Ha	692617
Lot 21 Deposited Plan 486181	Fee Simple Title	0.0550 Ha	692618
Lot 22 Deposited Plan 486181	Fee Simple Title	0.0550 Ha	692619
Lot 23 Deposited Plan 486181	Fee Simple Title	0.0550 Ha	692620
Lot 24 Deposited Plan 486181	Fee Simple Title	0.0571 Ha	692621
Lot 25 Deposited Plan 486181	Fee Simple Title	0.0577 Ha	692622
Lot 26 Deposited Plan 486181	Fee Simple Title	0.0379 Ha	692623
Lot 27 Deposited Plan 486181	Fee Simple Title	0.0347 Ha	692624
Lot 28 Deposited Plan 486181	Fee Simple Title	0.0410 Ha	692625
Lot 29 Deposited Plan 486181	Fee Simple Title	0.0450 Ha	692626
Lot 30 Deposited Plan 486181	Fee Simple Title	0.0613 Ha	692627
Lot 31 Deposited Plan 486181	Fee Simple Title	0.0444 Ha	692628
Lot 32 Deposited Plan 486181	Fee Simple Title	0.0400 Ha	692629
Lot 33 Deposited Plan 486181	Fee Simple Title	0.0400 Ha	692630
Lot 34 Deposited Plan 486181	Fee Simple Title	0.0400 Ha	692631
Lot 35 Deposited Plan 486181	Fee Simple Title	0.0388 Ha	692632
Lot 36 Deposited Plan 486181	Fee Simple Title	0.0527 Ha	692633
Lot 37 Deposited Plan 486181	Fee Simple Title	0.0550 Ha	692634
Lot 38 Deposited Plan 486181	Fee Simple Title	0.0486 Ha	692635
Lot 39 Deposited Plan 486181	Fee Simple Title	0.0472 Ha	692636
Lot 40 Deposited Plan 486181	Fee Simple Title	0.0376 Ha	692637
Lot 41 Deposited Plan 486181	Fee Simple Title	0.0352 Ha	692638
Lot 42 Deposited Plan 486181	Fee Simple Title	0.0495 Ha	692639
Lot 43 Deposited Plan 486181	Fee Simple Title	0.0496 Ha	692640
Lot 44 Deposited Plan 486181	Fee Simple Title	0.0477 Ha	692641
Lot 45 Deposited Plan 486181	Fee Simple Title	0.0490 Ha	692642
Lot 46 Deposited Plan 486181	Fee Simple Title	0.0507 Ha	692643
Lot 47 Deposited Plan 486181	Fee Simple Title	0.0516 Ha	692644
Lot 48 Deposited Plan 486181	Fee Simple Title	0.0510 Ha	692645
Lot 49 Deposited Plan 486181	Fee Simple Title	0.0582 Ha	692646
Lot 50 Deposited Plan 486181	Fee Simple Title	0.0735 Ha	692647
Lot 51 Deposited Plan 486181	Fee Simple Title	0.0725 Ha	692648
Lot 52 Deposited Plan 486181	Fee Simple Title	0.0562 Ha	692649
Lot 53 Deposited Plan 486181	Fee Simple Title	0.0541 Ha	692650
Lot 54 Deposited Plan 486181	Fee Simple Title	0.0541 Ha	692651
Area N Deposited Plan 486181	Easement		
Lot 55 Deposited Plan 486181	Fee Simple Title	0.0541 Ha	692652
Lot 56 Deposited Plan 486181	Fee Simple Title	0.0541 Ha	692653
Lot 57 Deposited Plan 486181	Fee Simple Title	0.0571 Ha	692654
Lot 58 Deposited Plan 486181	Fee Simple Title	0.0571 Ha	692655
Lot 59 Deposited Plan 486181	Fee Simple Title	0.0504 Ha	692656
Lot 60 Deposited Plan 486181	Fee Simple Title	0.0509 Ha	692657
Lot 61 Deposited Plan 486181	Fee Simple Title	0.0480 Ha	692658
Lot 62 Deposited Plan 486181	Fee Simple Title	0.0480 Ha	692659

Title Plan - LT 486181

Created Parcels

Parcels	Parcel Intent	Area	CT Reference
Lot 63 Deposited Plan 486181	Fee Simple Title	0.0480 Ha	692660
Lot 64 Deposited Plan 486181	Fee Simple Title	0.0480 Ha	692661
Lot 65 Deposited Plan 486181	Fee Simple Title	0.0481 Ha	692662
Lot 66 Deposited Plan 486181	Fee Simple Title	0.0532 Ha	692663
Lot 67 Deposited Plan 486181	Fee Simple Title	0.0531 Ha	692664
Lot 68 Deposited Plan 486181	Fee Simple Title	0.0461 Ha	692665
Lot 69 Deposited Plan 486181	Fee Simple Title	0.0461 Ha	692666
Lot 70 Deposited Plan 486181	Fee Simple Title	0.0501 Ha	692667
Lot 71 Deposited Plan 486181	Fee Simple Title	0.0504 Ha	692668
Lot 72 Deposited Plan 486181	Fee Simple Title	0.0523 Ha	692669
Lot 73 Deposited Plan 486181	Fee Simple Title	0.0480 Ha	692670
Lot 74 Deposited Plan 486181	Fee Simple Title	0.0480 Ha	692671
Lot 75 Deposited Plan 486181	Fee Simple Title	0.0540 Ha	692672
Lot 76 Deposited Plan 486181	Fee Simple Title	0.0526 Ha	692673
Lot 77 Deposited Plan 486181	Fee Simple Title	0.0577 Ha	692674
Lot 78 Deposited Plan 486181	Fee Simple Title	0.0540 Ha	692675
Lot 79 Deposited Plan 486181	Fee Simple Title	0.0540 Ha	692676
Lot 80 Deposited Plan 486181	Fee Simple Title	0.0540 Ha	692677
Lot 81 Deposited Plan 486181	Fee Simple Title	0.0540 Ha	692678
Lot 82 Deposited Plan 486181	Fee Simple Title	0.0540 Ha	692679
Lot 83 Deposited Plan 486181	Fee Simple Title	0.0524 Ha	692680
Lot 84 Deposited Plan 486181	Fee Simple Title	0.0521 Ha	692681
Lot 85 Deposited Plan 486181	Fee Simple Title	0.0489 Ha	692682
Lot 86 Deposited Plan 486181	Fee Simple Title	0.0489 Ha	692683
Lot 87 Deposited Plan 486181	Fee Simple Title	0.0466 Ha	692684
Lot 88 Deposited Plan 486181	Fee Simple Title	0.0465 Ha	692685
Lot 89 Deposited Plan 486181	Fee Simple Title	0.0463 Ha	692686
Lot 90 Deposited Plan 486181	Fee Simple Title	0.0459 Ha	692687
Lot 91 Deposited Plan 486181	Fee Simple Title	0.0450 Ha	692688
Lot 92 Deposited Plan 486181	Fee Simple Title	0.0450 Ha	692689
Lot 93 Deposited Plan 486181	Fee Simple Title	0.0500 Ha	692690
Lot 94 Deposited Plan 486181	Fee Simple Title	0.0500 Ha	692691
Lot 95 Deposited Plan 486181	Fee Simple Title	0.0560 Ha	692692
Lot 96 Deposited Plan 486181	Fee Simple Title	0.0529 Ha	692693
Lot 97 Deposited Plan 486181	Fee Simple Title	0.0529 Ha	692694
Lot 98 Deposited Plan 486181	Fee Simple Title	0.0529 Ha	692695
Lot 99 Deposited Plan 486181	Fee Simple Title	0.0529 Ha	692696
Lot 100 Deposited Plan 486181	Fee Simple Title	0.0532 Ha	692697
Lot 101 Deposited Plan 486181	Fee Simple Title	0.0546 Ha	692698
Lot 102 Deposited Plan 486181	Fee Simple Title	0.0547 Ha	692699
Lot 103 Deposited Plan 486181	Fee Simple Title	0.0568 Ha	692700
Lot 107 Deposited Plan 486181	Fee Simple Title	0.0495 Ha	692701
Lot 108 Deposited Plan 486181	Fee Simple Title	0.0495 Ha	692702
Lot 109 Deposited Plan 486181	Fee Simple Title	0.0495 Ha	692703

Title Plan - LT 486181

Created Parcels

Parcels	Parcel Intent	Area	CT Reference
Lot 110 Deposited Plan 486181	Fee Simple Title	0.0495 Ha	692704
Lot 111 Deposited Plan 486181	Fee Simple Title	0.0495 Ha	692705
Lot 112 Deposited Plan 486181	Fee Simple Title	0.0491 Ha	692706
Lot 113 Deposited Plan 486181	Fee Simple Title	0.0563 Ha	692707
Lot 114 Deposited Plan 486181	Fee Simple Title	0.0652 Ha	692708
Lot 115 Deposited Plan 486181	Fee Simple Title	0.0779 Ha	692709
Lot 116 Deposited Plan 486181	Fee Simple Title	0.0814 Ha	692710
Lot 117 Deposited Plan 486181	Fee Simple Title	0.0690 Ha	692711
Lot 118 Deposited Plan 486181	Fee Simple Title	0.0701 Ha	692712
Lot 119 Deposited Plan 486181	Fee Simple Title	0.0709 Ha	692713
Lot 120 Deposited Plan 486181	Fee Simple Title	0.0731 Ha	692714
Lot 121 Deposited Plan 486181	Fee Simple Title	0.0755 Ha	692715
Lot 122 Deposited Plan 486181	Fee Simple Title	0.0782 Ha	692716
Lot 123 Deposited Plan 486181	Fee Simple Title	0.0825 Ha	692717
Lot 124 Deposited Plan 486181	Fee Simple Title	0.1005 Ha	692718
Lot 125 Deposited Plan 486181	Fee Simple Title	0.1114 Ha	692719
Lot 126 Deposited Plan 486181	Fee Simple Title	0.0884 Ha	692720
Lot 127 Deposited Plan 486181	Fee Simple Title	0.0875 Ha	692721
Lot 128 Deposited Plan 486181	Fee Simple Title	0.0797 Ha	692722
Lot 129 Deposited Plan 486181	Fee Simple Title	0.0930 Ha	692723
Lot 130 Deposited Plan 486181	Fee Simple Title	0.0930 Ha	692724
Lot 131 Deposited Plan 486181	Fee Simple Title	0.0913 Ha	692725
Lot 132 Deposited Plan 486181	Fee Simple Title	0.0499 Ha	692726
Lot 133 Deposited Plan 486181	Fee Simple Title	0.0514 Ha	692727
Lot 134 Deposited Plan 486181	Fee Simple Title	0.0532 Ha	692728
Lot 135 Deposited Plan 486181	Fee Simple Title	0.0571 Ha	692729
Lot 136 Deposited Plan 486181	Fee Simple Title	0.0563 Ha	692730
Lot 137 Deposited Plan 486181	Fee Simple Title	0.0496 Ha	692731
Lot 138 Deposited Plan 486181	Fee Simple Title	0.0507 Ha	692732
Lot 139 Deposited Plan 486181	Fee Simple Title	0.0511 Ha	692733
Lot 140 Deposited Plan 486181	Fee Simple Title	0.0541 Ha	692734
Lot 141 Deposited Plan 486181	Fee Simple Title	0.0482 Ha	692735
Lot 142 Deposited Plan 486181	Fee Simple Title	0.0482 Ha	692736
Lot 143 Deposited Plan 486181	Fee Simple Title	0.0481 Ha	692737
Lot 144 Deposited Plan 486181	Fee Simple Title	0.0501 Ha	692738
Lot 145 Deposited Plan 486181	Fee Simple Title	0.0557 Ha	692739
Lot 146 Deposited Plan 486181	Fee Simple Title	0.0450 Ha	692740
Lot 147 Deposited Plan 486181	Fee Simple Title	0.0450 Ha	692741
Lot 890 Deposited Plan 486181	Fee Simple Title	0.1003 Ha	692742
Lot 903 Deposited Plan 486181	Vesting on Deposit for Road	2.5159 Ha	
Lot 904 Deposited Plan 486181	Vesting on Deposit for Road	1.0643 Ha	

Title Plan - LT 486181

Created Parcels

Parcels	Parcel Intent	Area	CT Reference
Lot 933 Deposited Plan 486181	Vesting on Deposit for Local Purpose Reserve	8.2307 Ha	692743
Area AG Deposited Plan 486181	Easement		
Lot 934 Deposited Plan 486181	Fee Simple Title	0.0212 Ha	692744
Area AH Deposited Plan 486181	Easement		
Lot 935 Deposited Plan 486181	Vesting on Deposit for Recreation Reserve (Territorial Authority)	0.1910 Ha	692745
Lot 936 Deposited Plan 486181	Vesting on Deposit for Accessway	0.0402 Ha	692746
Lot 966 Deposited Plan 486181	Fee Simple Title	0.0980 Ha	Multiple
Lot 1001 Deposited Plan 486181	Fee Simple Title	46.5727 Ha	692747
Area A Deposited Plan 486181	Easement		
Area B Deposited Plan 486181	Easement		
Area C Deposited Plan 486181	Easement		
Area D Deposited Plan 486181	Easement		
Area E Deposited Plan 486181	Easement		
Area F Deposited Plan 486181	Easement		
Area G Deposited Plan 486181	Easement		
Area H Deposited Plan 486181	Easement		
Area I Deposited Plan 486181	Easement		
Area J Deposited Plan 486181	Easement		
Area K Deposited Plan 486181	Easement		
Area L Deposited Plan 486181	Easement		
Area M Deposited Plan 486181	Easement		
Area O Deposited Plan 486181	Easement		
Area P Deposited Plan 486181	Easement		
Area Q Deposited Plan 486181	Easement		
Area R Deposited Plan 486181	Easement		
Area S Deposited Plan 486181	Easement		
Area RA Deposited Plan 486181	Land Covenant		
Area RB Deposited Plan 486181	Land Covenant		
Area RC Deposited Plan 486181	Land Covenant		
Area RD Deposited Plan 486181	Land Covenant		
Area RE Deposited Plan 486181	Land Covenant		
Area RF Deposited Plan 486181	Land Covenant		
Area RG Deposited Plan 486181	Land Covenant		
Area RH Deposited Plan 486181	Land Covenant		
Area RI Deposited Plan 486181	Land Covenant		
Area RJ Deposited Plan 486181	Land Covenant		
Area RK Deposited Plan 486181	Land Covenant		
Area RL Deposited Plan 486181	Land Covenant		
Area Y Deposited Plan 486181	Easement		
Area Z Deposited Plan 486181	Easement		



Title Plan - LT 486181

Created Parcels

Parcels	Parcel Intent	Area	CT Reference
Area AA Deposited Plan 486181	Easement		
Area AB Deposited Plan 486181	Easement		
Area AC Deposited Plan 486181	Easement		
Area AD Deposited Plan 486181	Easement		
Area AE Deposited Plan 486181	Easement		
Area AF Deposited Plan 486181	Easement		
Area T Deposited Plan 486181	Easement		
Area U Deposited Plan 486181	Easement		
Lot 6 Deposited Plan 348694	Fee Simple Title	0.8700 Ha	
Area V Deposited Plan 486181	Easement		
Area W Deposited Plan 486181	Easement		
Total Area		<hr/> 67.7805 Ha	

**Land Registration District**

South Auckland

Plan Number

DP 486181

TCC Ref: RC21332

Harrison Grierson Ref: 1520-135959-01

Memorandum of Easements (Pursuant to s243 Resource Management Act 1991)			
Purpose	Shown	Servient Tenement	Dominant Tenement
Right of Way	A	Lot 115 hereon	Lots 114 & 116 hereon
	C, V, W	Lot 934 hereon	Lot 51 hereon
Right of Way Right to drain Water & Sewage Right to convey Electricity, Gas & Water Right to convey Telecommunications and Computer Media	B	Lot 966 hereon	Lots 29-36 hereon
Right to convey Electricity, Gas & Water Right to convey Telecommunications and Computer Media	V	Lot 934 hereon	Lot 51 hereon

Memorandum of Easements in Gross (Pursuant to s243 Resource Management Act 1991)			
Purpose	Shown	Servient Tenement	Grantee
Right to drain Water & Sewage	D	Lot 107 hereon	Tauranga City Council
	E	Lot 108 hereon	
	F	Lot 109 hereon	
	G	Lot 110 hereon	
	H	Lot 111 hereon	
	I	Lot 112 hereon	
	J	Lot 113 hereon	

Memorandum of Easements in Gross (cont) (Pursuant to s243 Resource Management Act 1991)			
Purpose	Shown	Servient Tenement	Grantee
Right to drain Water & Sewage	K	Lot 13 hereon	Tauranga City Council
	L	Lot 115 hereon	
	M	Lot 116 hereon	
	N, T	Lot 933 hereon	
	V, W	Lot 934 hereon	
	O	Lot 117 hereon	
	P	Lot 118 hereon	
	Q	Lot 119 hereon	
	R	Lot 120 hereon	
	S	Lot 121 hereon	
Right to drain Water & Sewage Right to convey Water	B	Lot 966 hereon	
Right to drain Water	AG, AH	Lot 933 hereon	

Schedule of Proposed Easements in Gross			
Purpose	Shown	Servient Tenement	Grantee
Right to convey Electricity	B	Lot 966 hereon	Powerco Ltd
Right to convey Telecommunications and Computer Media			Waikato Networks Ltd
Right to convey Gas			Vector Gas Ltd

Schedule of Existing Easements in Gross (Pursuant to s243 Resource Management Act 1991)			
Purpose	Shown	Servient Tenement	Grantee / Document Number
Right to drain Water & Sewage	Y	Lot 933 hereon	Tauranga City Council EI 9732418.4
Right to drain Water	Z, AA, AB, AC, AD, AE, AF		

Schedule of Existing Easements (Pursuant to s243 Resource Management Act 1991)			
Purpose	Shown	Servient Tenement	Document Number
Right of Way	U	Lot 1001 hereon	EI 6592047.7

Schedule of Existing Easements			
Purpose	Shown	Servient Tenement	Document Number
Right to convey Electricity, Water & Gas Right to convey Telecommunications and Computer Media	U	Lot 1001 hereon	EI 6592047.7

Areas RA - RL are subject to a Consent Notice.

Amalgamation Conditions

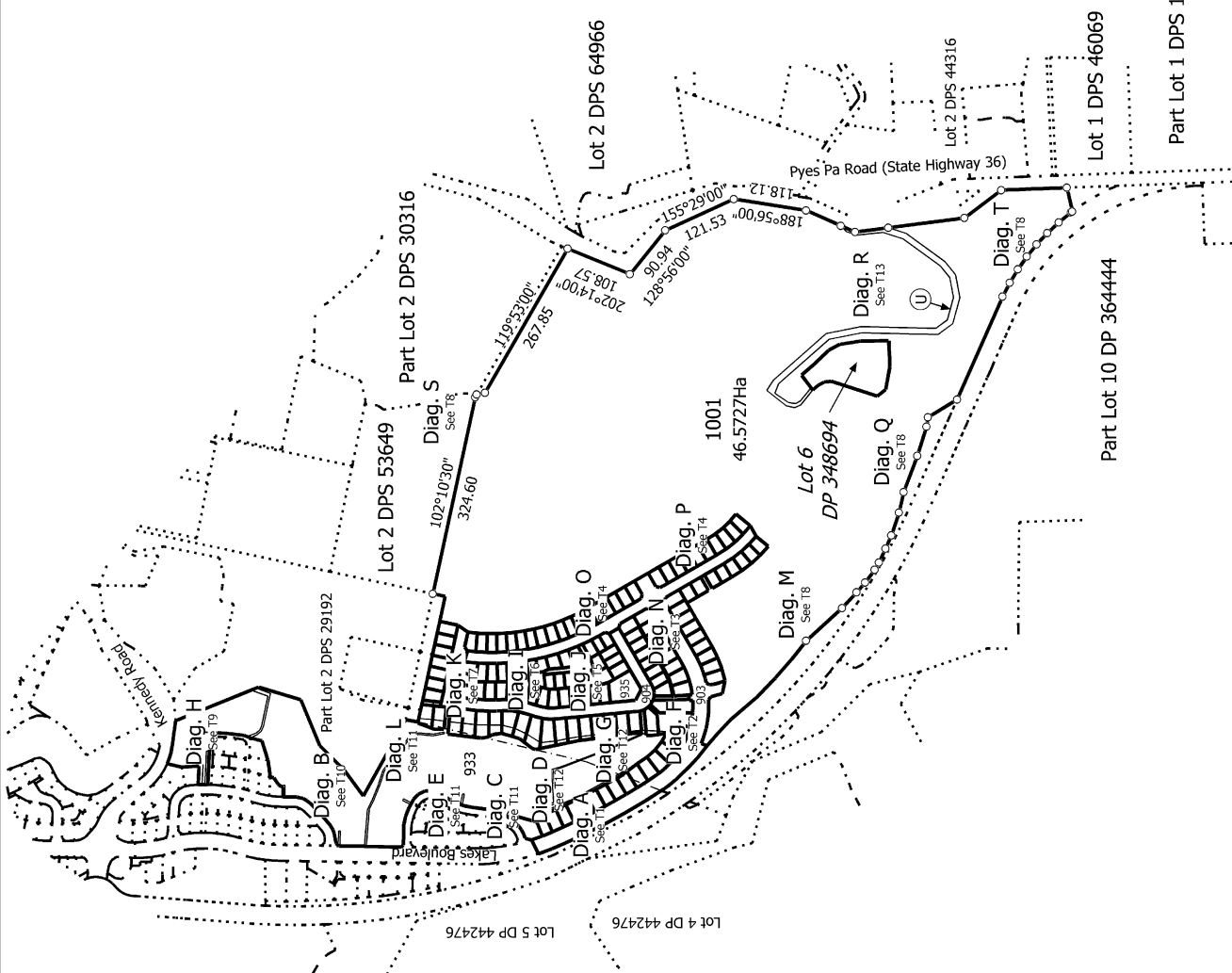
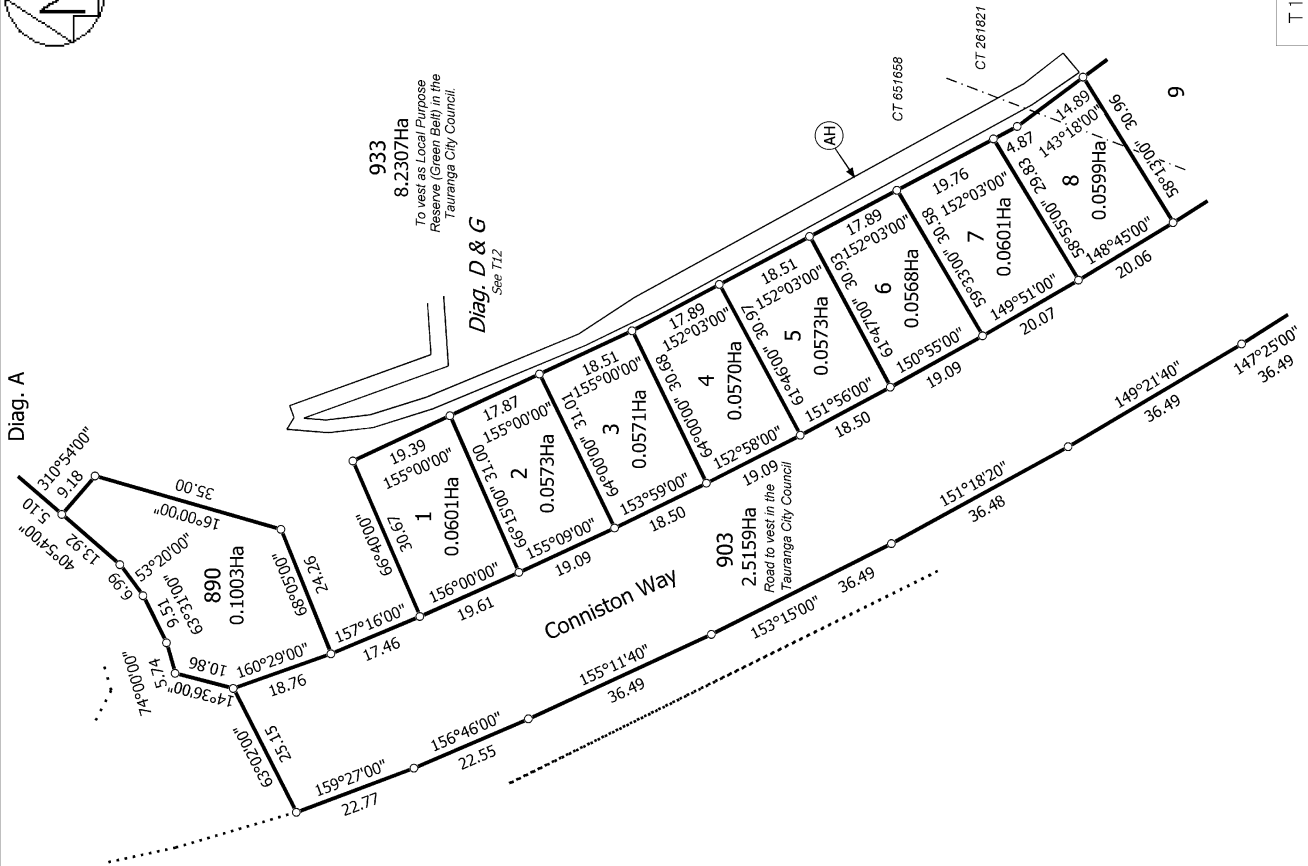
That Lot 966 hereon be held as 8 undivided one eighth shares by the owners of Lots 29-36 hereon as Tenants in Common in the said shares and that individual computer registers be issued in accordance therewith. See requests 1114213, 1152384, 1191724 & 1204864.

That Lot 934 hereon (CT 692744) be transferred to the owner Section 2 SO 416677 and Section 2 SO 440742 (CT 482146) and that one computer register be issued to include all parcels. See requests 1114213, 1152384, 1191724 & 1204864.

That Lot 890 hereon (CT 692742) be transferred to the owner Lot 1 DP 474511 (CT 651657) and that one computer register be issued to include both parcels. See request 1276588.



Diag. A



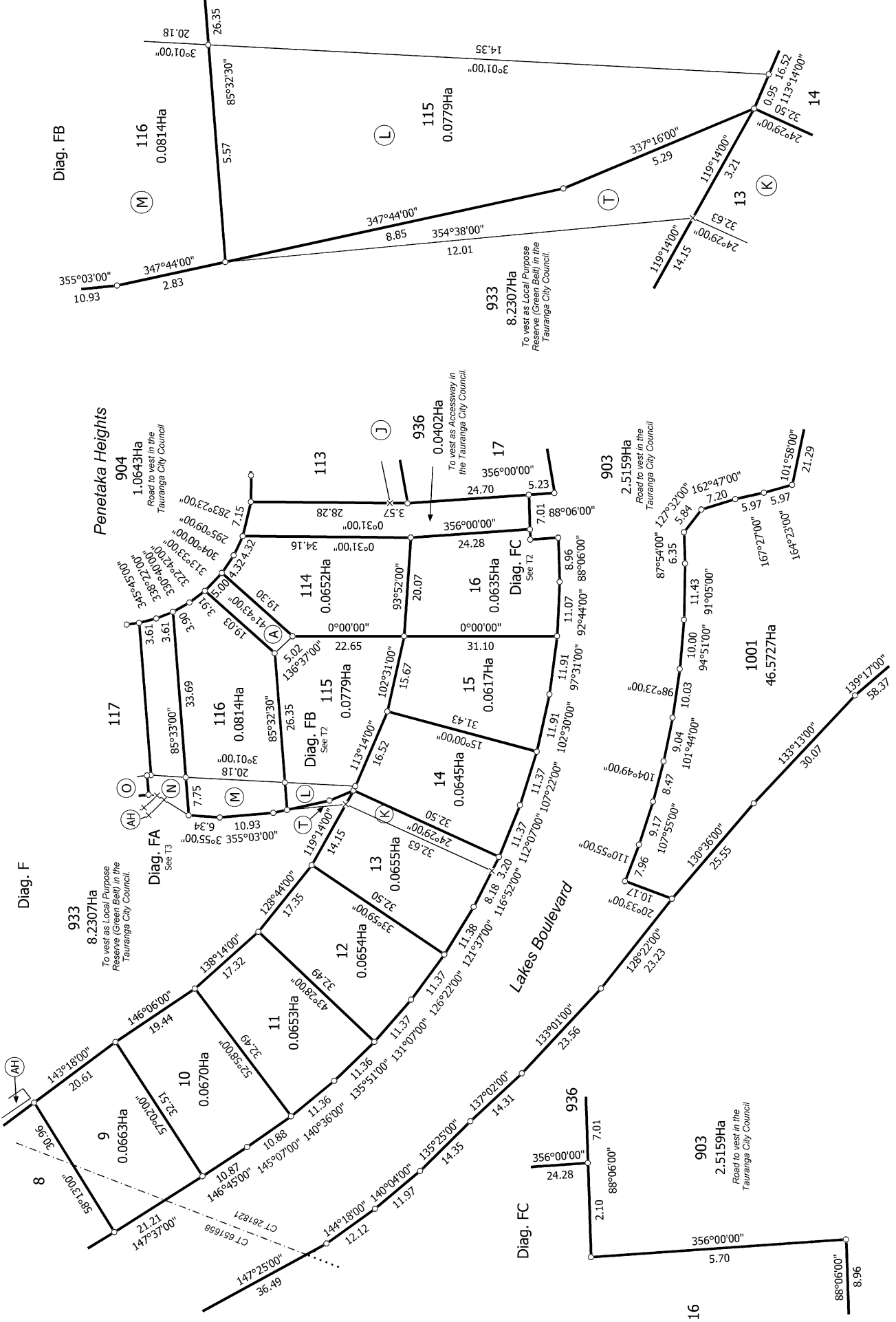
T 1/13

Title Plan
 LT 486181
 Approved on: 16/06/2015

Surveyor: Michael Peter Dewhirst
 Firm: Harrison Grierson Consultants Ltd

Lots 1-103, 107-147, 890, 903-904, 933-936, 966 & 1001 being a subdivision of Pt Lot 11 DP 364444 & Lot 2 DP 474511

Land District: South Auckland
Digitally Generated Plan
 Generated on: 16/06/2015 11:21:21 am Page 10 of 22

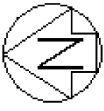


T 2/13

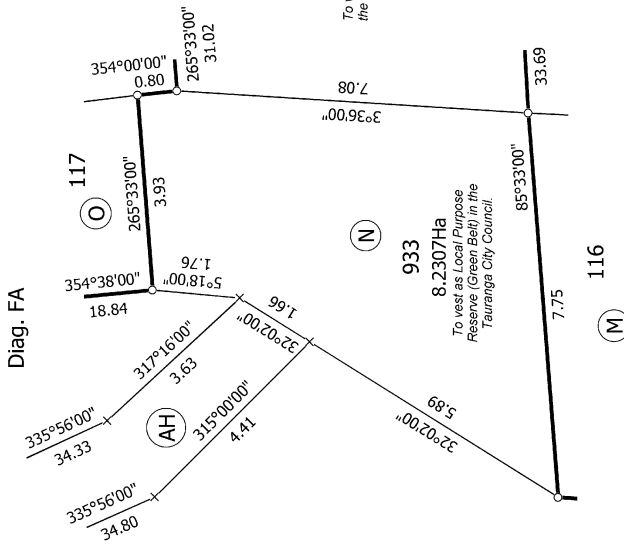
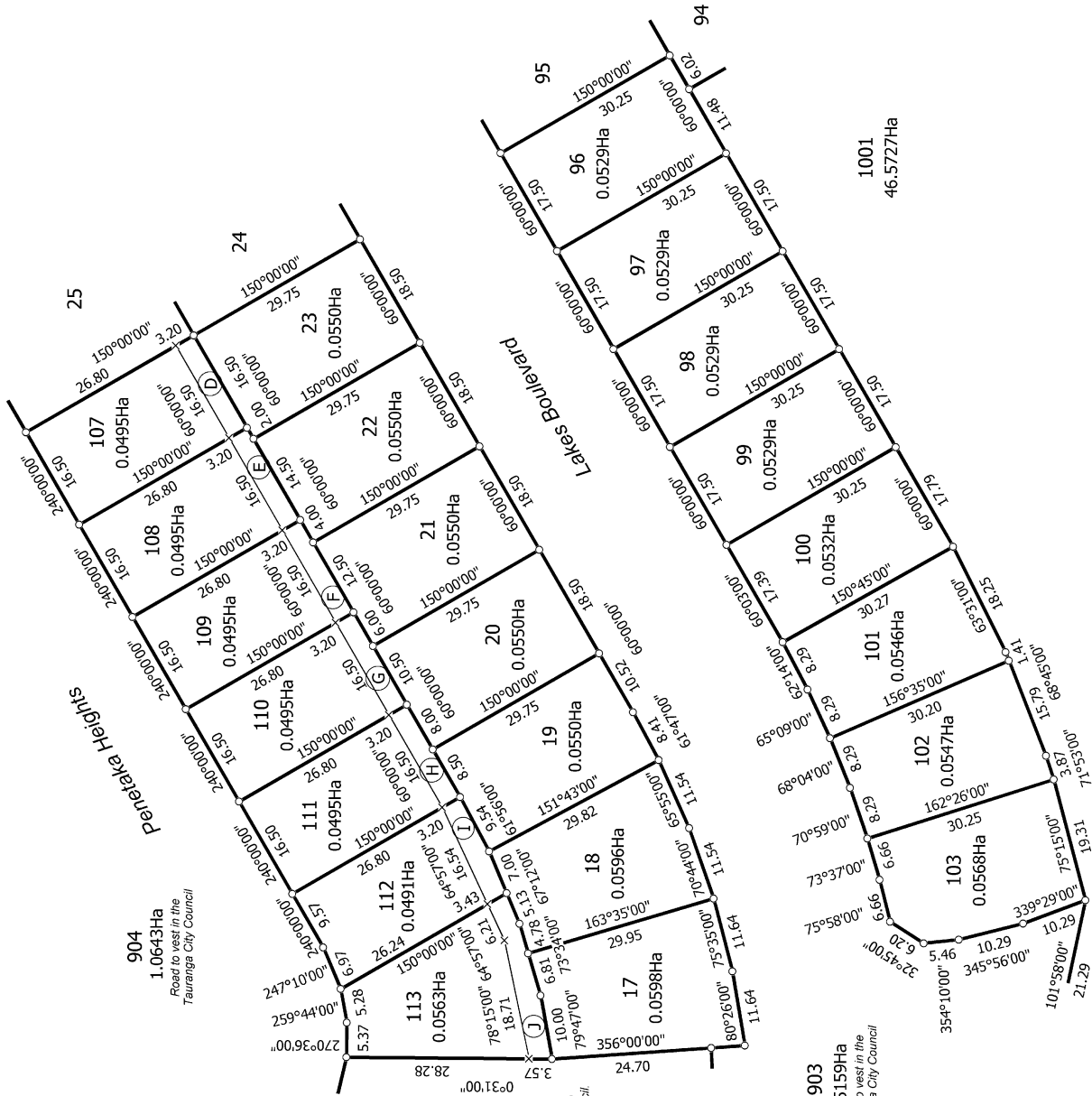
Lots 1-103, 107-147, 890, 903-904, 933-936, 966 & 1001 being a subdivision of Pt Lot 11 DP 364444 & Lot 2 DP 474511

Surveyor: Michael Peter Dewhirst
 Firm: Harrison Grierson Consultants Ltd

Title Plan
 LT 486181
 Approved on: 16/06/2015



Diag. N



T 3/13

Land District: South Auckland

Digitally Generated Plan

Generated on: 16/06/2015 11:21:am Page 12 of 22

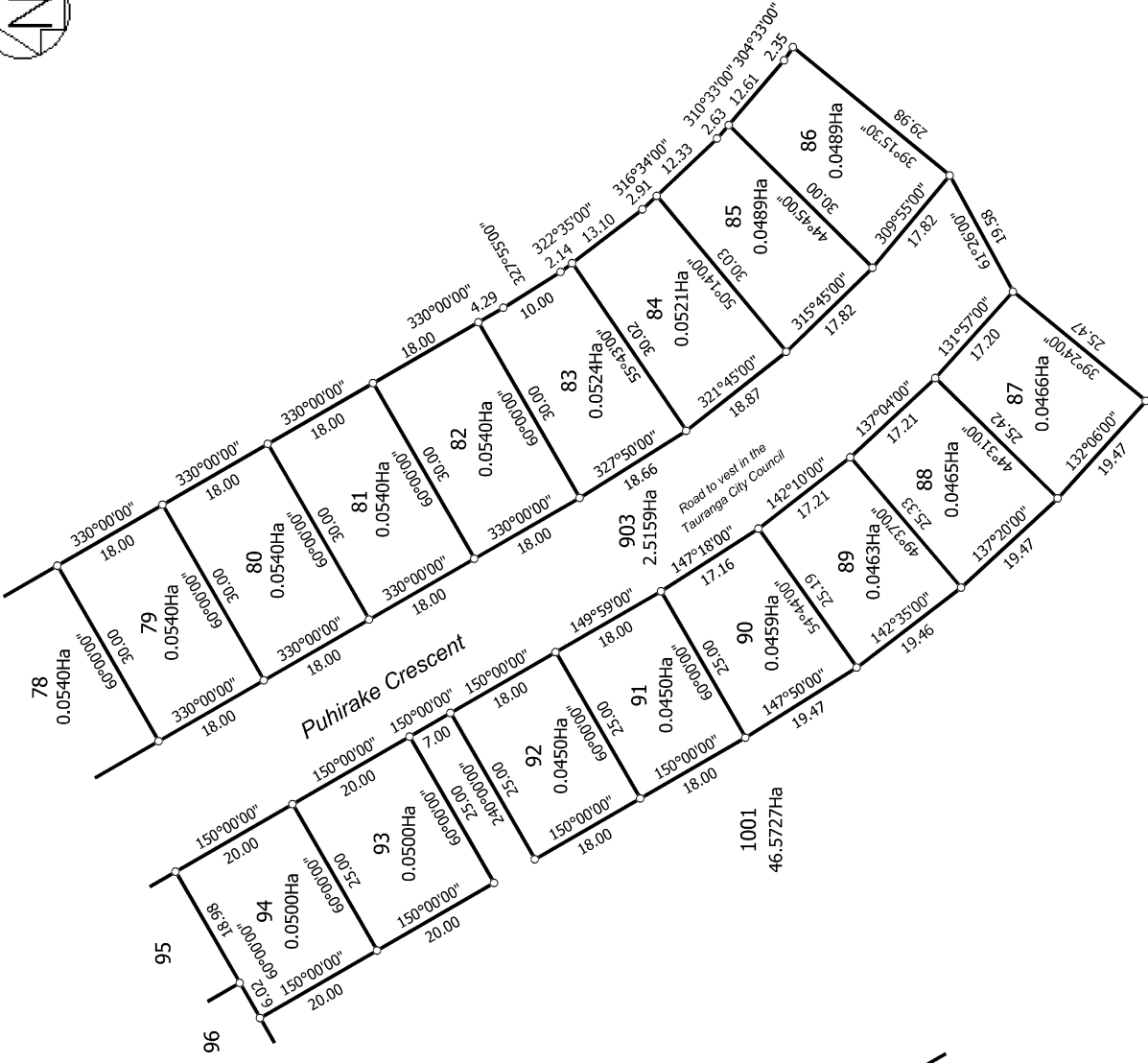
Lots 1-103, 107-147, 890, 903-904, 933-936, 966 & 1001 being a subdivision of Pt Lot 11 DP 364444 & Lot 2 DP 474511

Surveyor: Michael Peter Dewhirst
Firm: Harrison Grierson Consultants Ltd

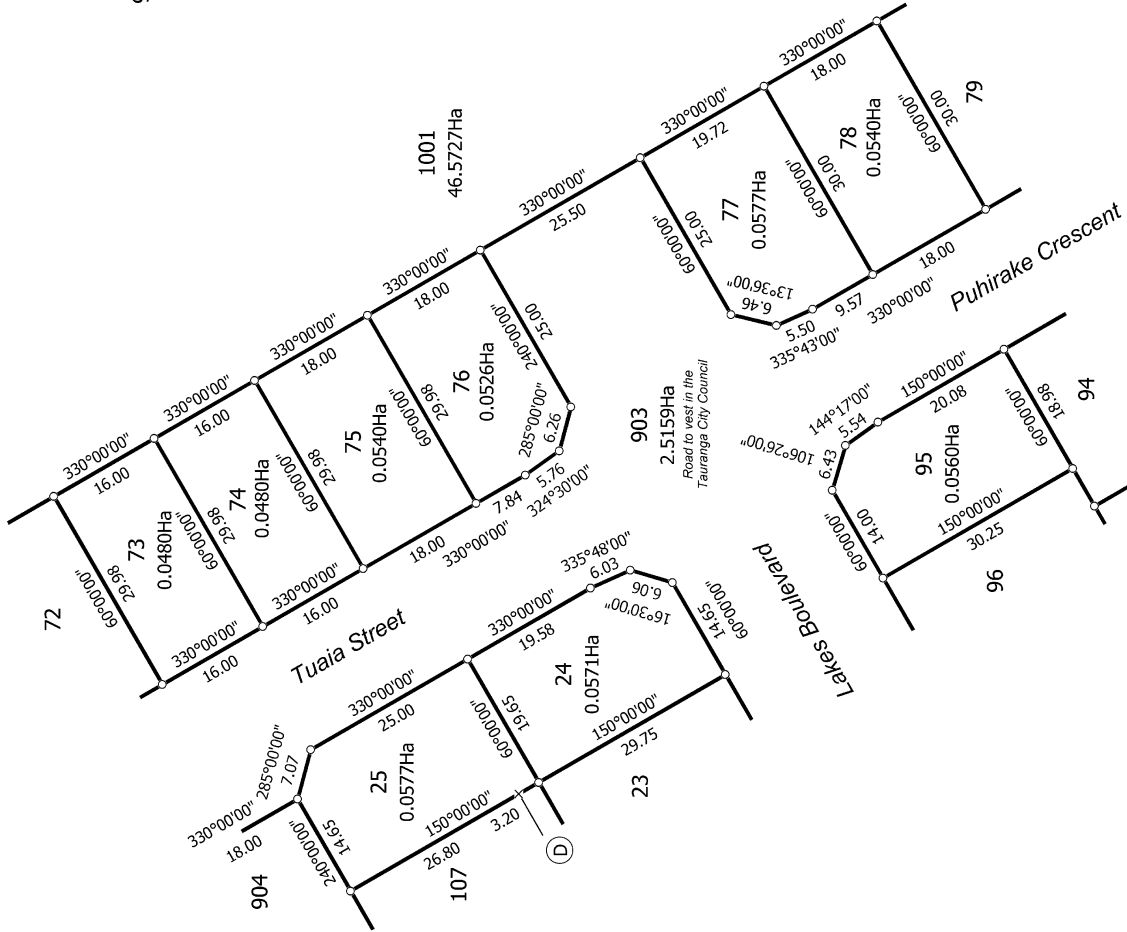
Title Plan
LT 486181
Approved on: 16/06/2015



Diag. P



Diag. O



T 4/13

Land District: South Auckland

Digitally Generated Plan

Generated on: 16/06/2015 11:21:am Page 13 of 22

Lots 1-103, 107-147, 890, 903-904, 933-936, 966 & 1001 being a subdivision of Pt Lot 11 DP 364444 & Lot 2 DP 474511

Surveyor: Michael Peter Dewhirst
Firm: Harrison Grierson Consultants Ltd

Title Plan
LT 486181
Approved on: 16/06/2015



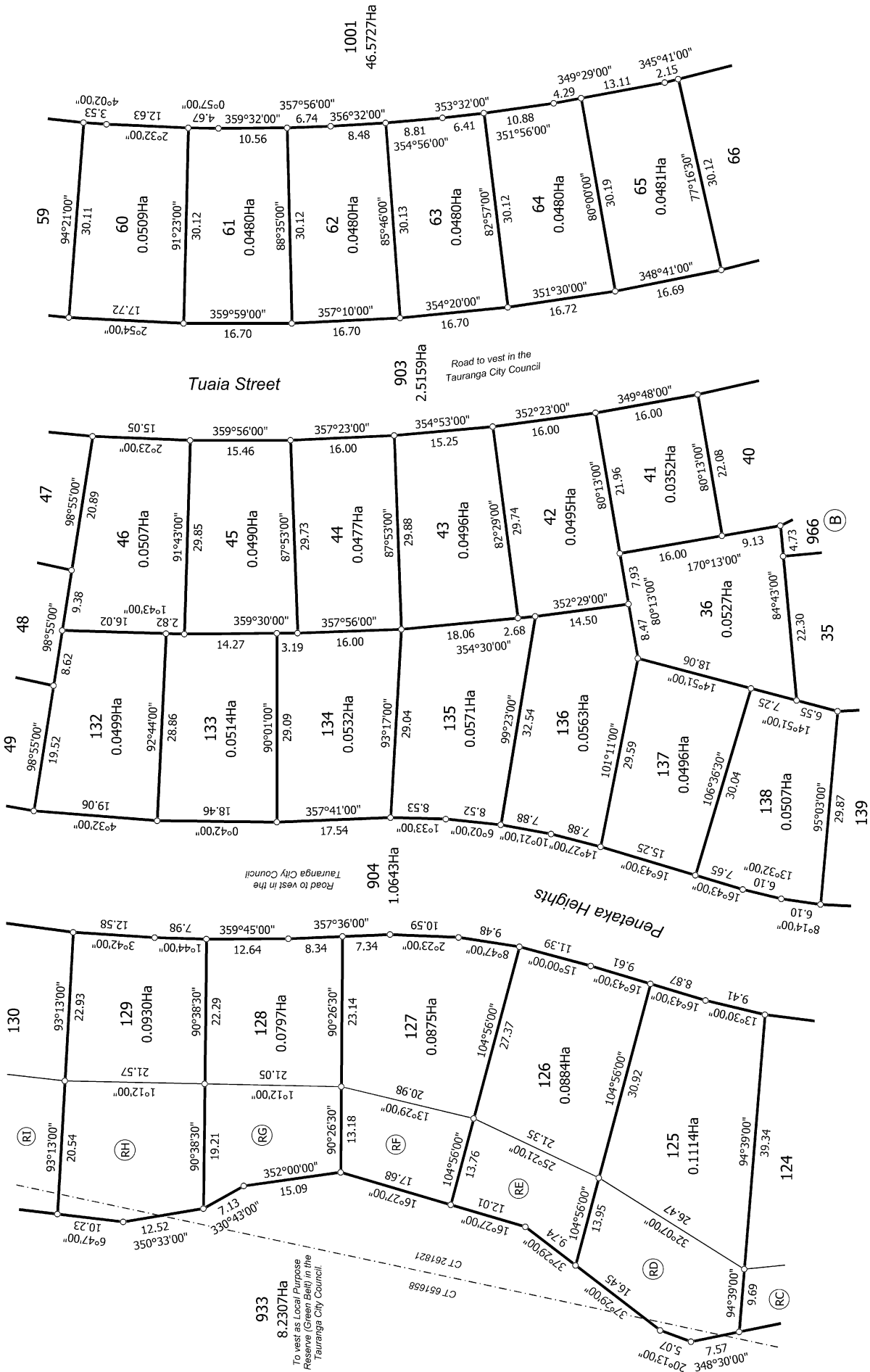
Title Plan
 LT 486181
 Approved on: 16/06/2015

Surveyor: Michael Peter Dewhirst
 Firm: Harrison Grierson Consultants Ltd

Lots 1-103, 107-147, 890, 903-904, 933-936, 966 & 1001 being a subdivision of Pt Lot 11 DP 364444 & Lot 2 DP 474511



Diag. I

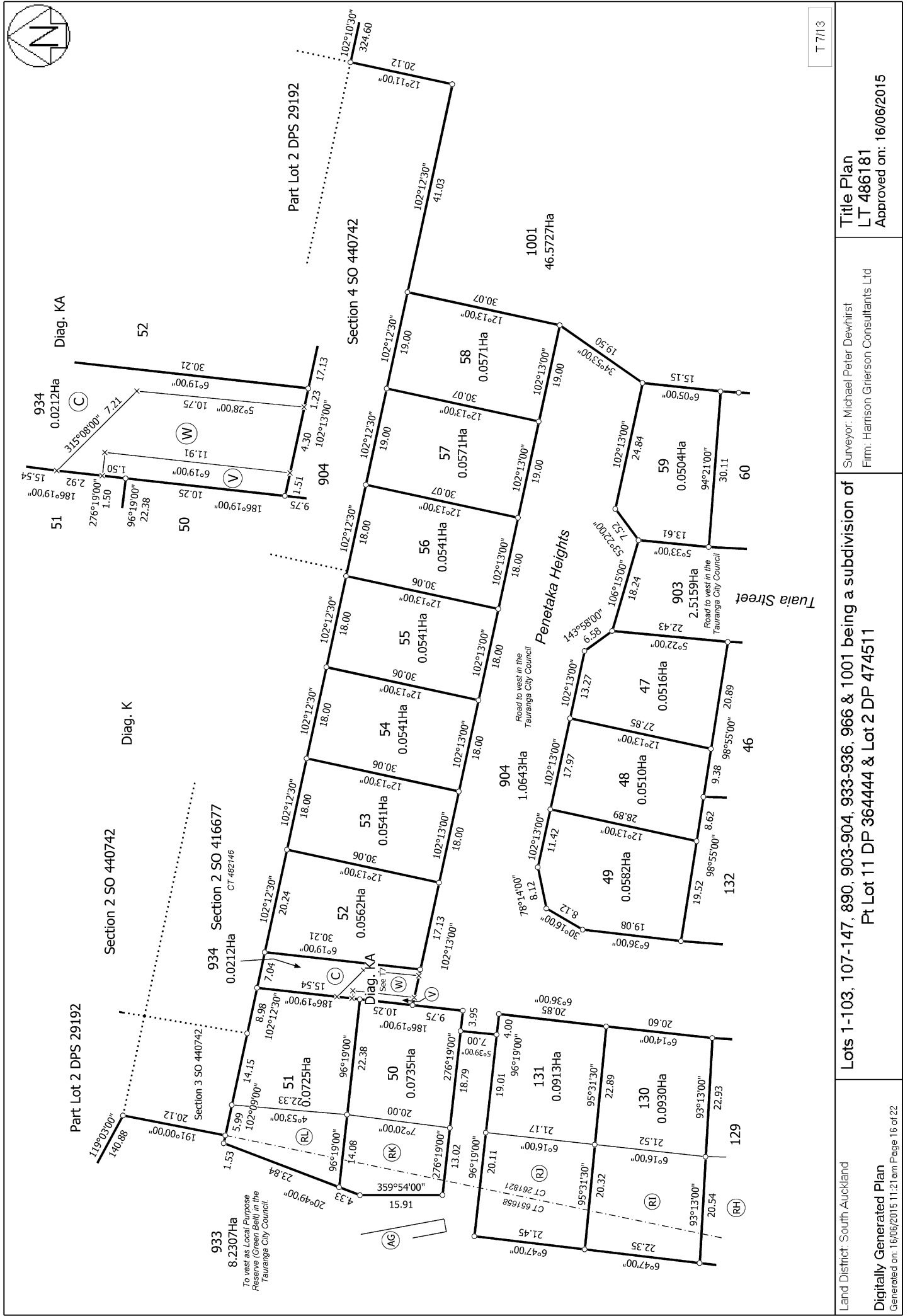
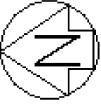


T 6/13

Land District: South Auckland
 Digitally Generated Plan
 Generated on: 16/06/2015 11:21:am Page 15 of 22

Surveyor: Michael Peter Dewhurst
 Firm: Harrison Grierson Consultants Ltd
 Title Plan
 LT 486181
 Approved on: 16/06/2015

Lots 1-103, 107-147, 890, 903-904, 933-936, 966 & 1001 being a subdivision of Pt Lot 11 DP 364444 & Lot 2 DP 474511



T 7/13

Land District: South Auckland

Digitally Generated Plan

Generated on: 16/06/2015 11:21:am Page 16 of 22

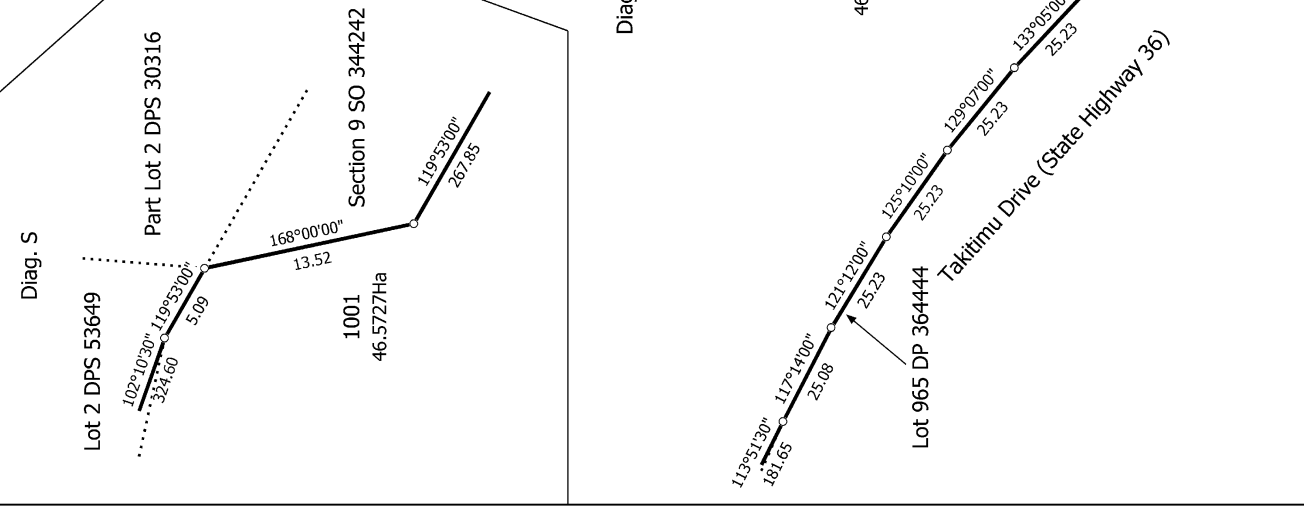
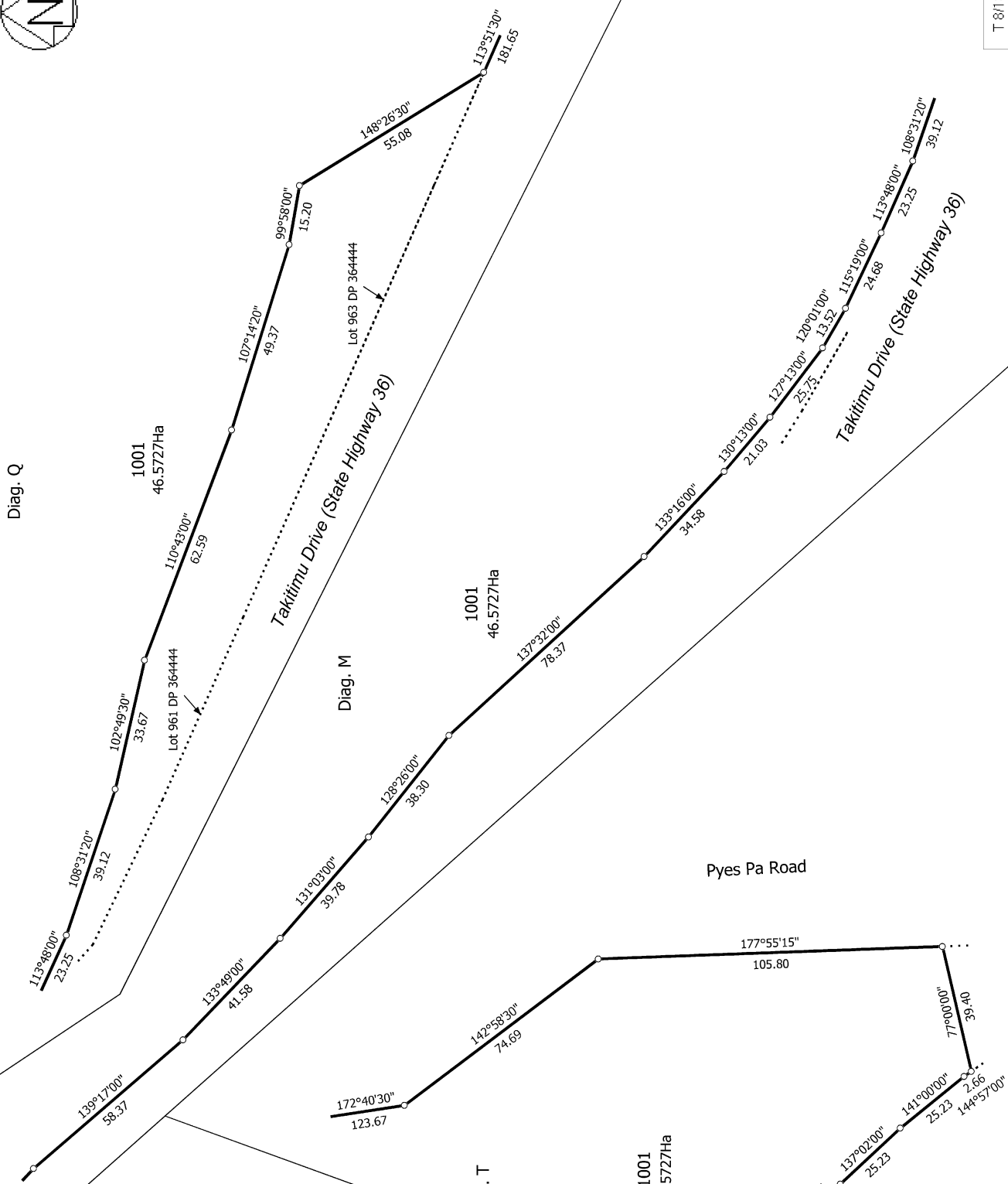
Lots 1-103, 107-147, 890, 903-904, 933-936, 966 & 1001 being a subdivision of Pt Lot 11 DP 364444 & Lot 2 DP 474511

Surveyor: Michael Peter Dewhirst
Firm: Harrison Grierson Consultants Ltd

Title Plan
LT 486181
Approved on: 16/06/2015



Diag. Q



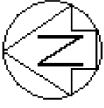
T 8/13

Title Plan
 LT 486181
 Approved on: 16/06/2015

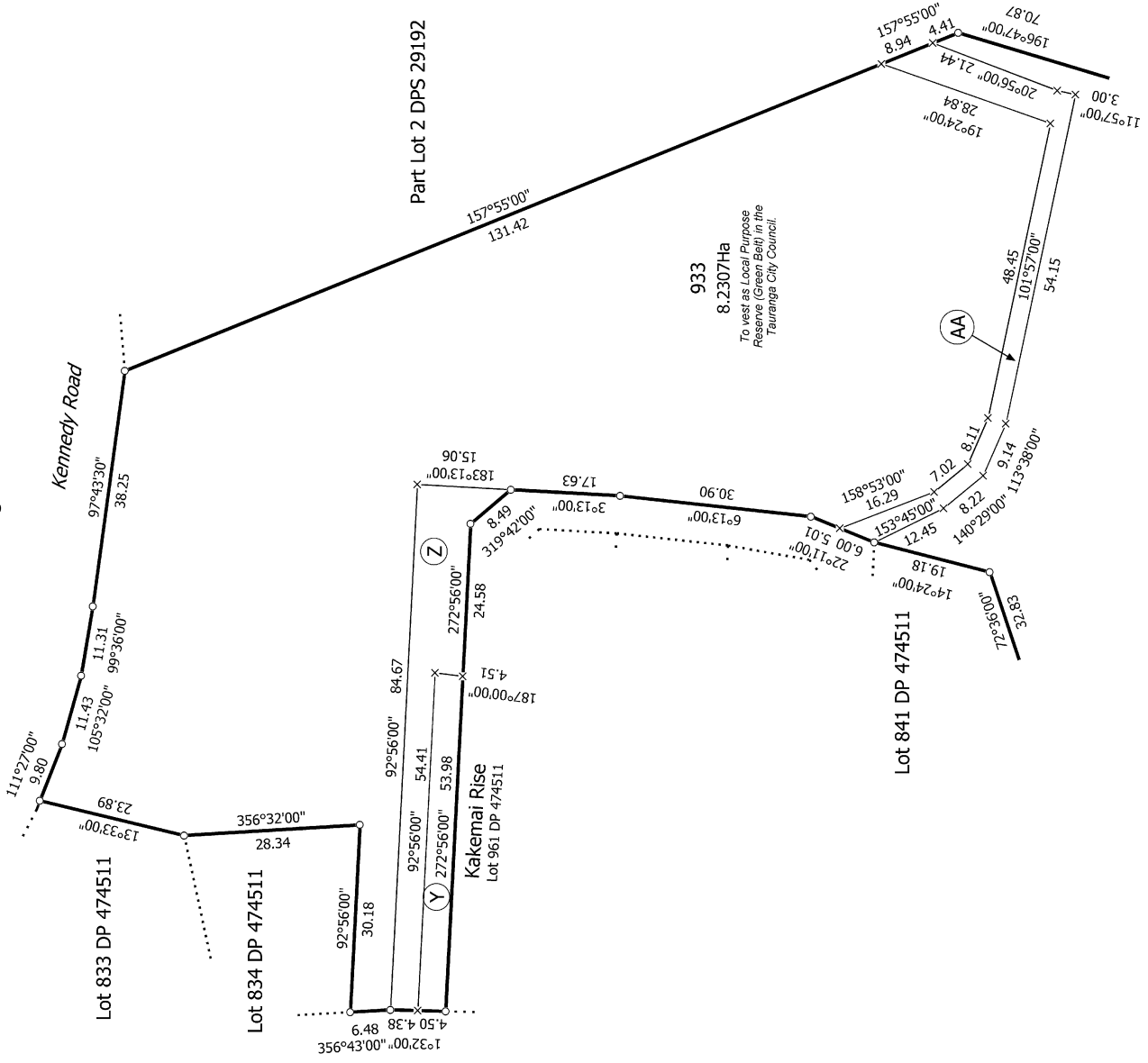
Surveyor: Michael Peter Dewhurst
 Firm: Harrison Grierson Consultants Ltd

Lots 1-103, 107-147, 890, 903-904, 933-936, 966 & 1001 being a subdivision of Pt Lot 11 DP 364444 & Lot 2 DP 474511

Land District: South Auckland
Digitally Generated Plan
 Generated on: 16/06/2015 11:21:am Page 17 of 22



Diag. H

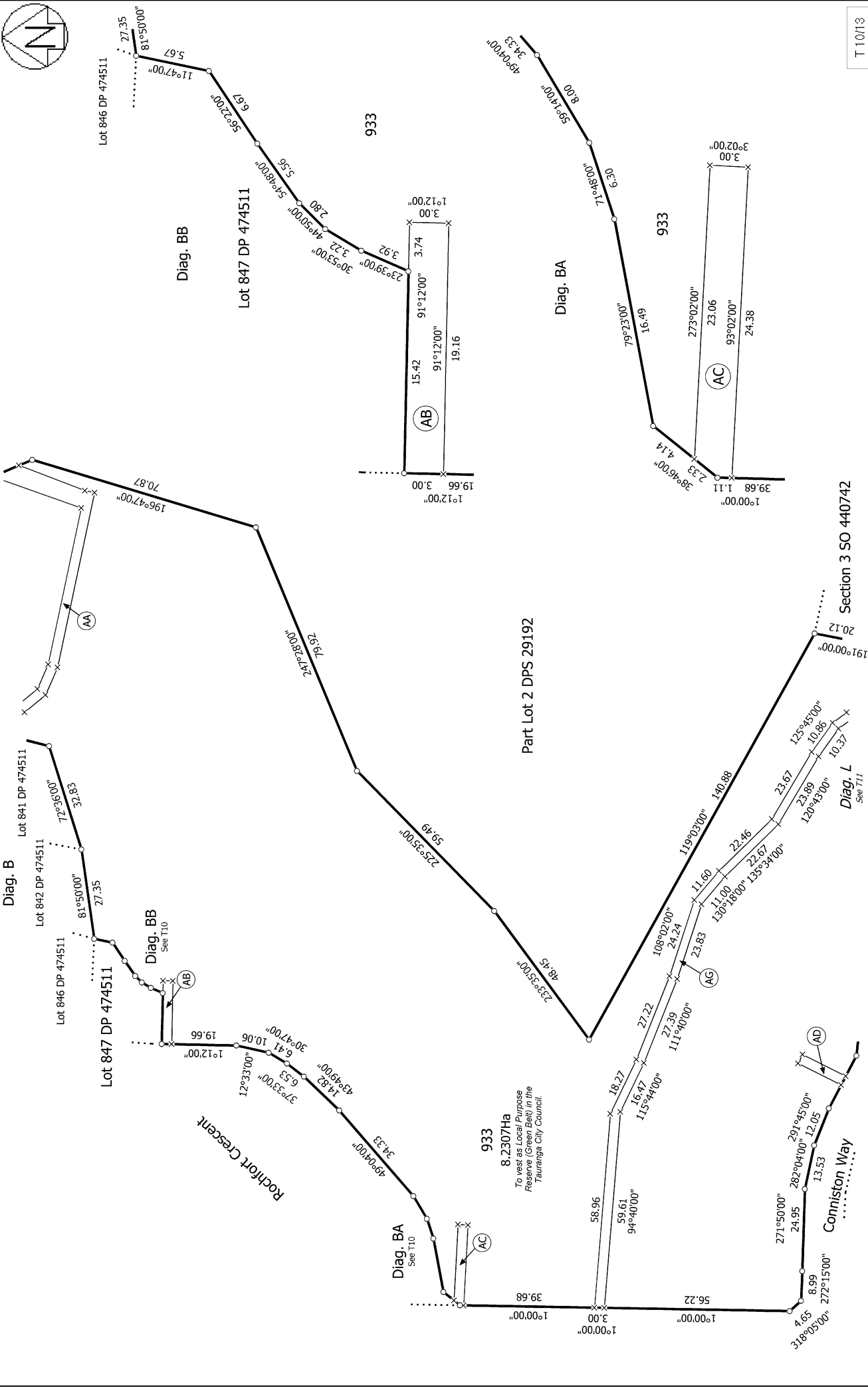
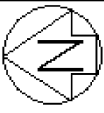


T 9/13

Title Plan
LT 486181
Approved on: 16/06/2015

Surveyor: Michael Peter Dewhirst
Firm: Harrison Grierson Consultants Ltd

Lots 1-103, 107-147, 890, 903-904, 933-936, 966 & 1001 being a subdivision of
Pt Lot 11 DP 364444 & Lot 2 DP 474511



T 10/13

Land District: South Auckland

Digitally Generated Plan

Generated on: 16/06/2015 11:21:am Page 19 of 22

Lots 1-103, 107-147, 890, 903-904, 933-936, 966 & 1001 being a subdivision of

Pt Lot 11 DP 364444 & Lot 2 DP 474511

Surveyor: Michael Peter Dewhirst

Firm: Harrison Grierson Consultants Ltd

Title Plan

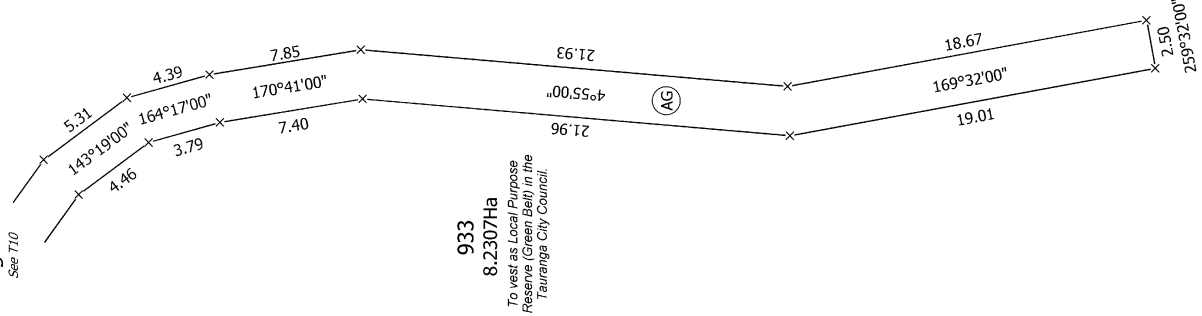
LT 486181

Approved on: 16/06/2015



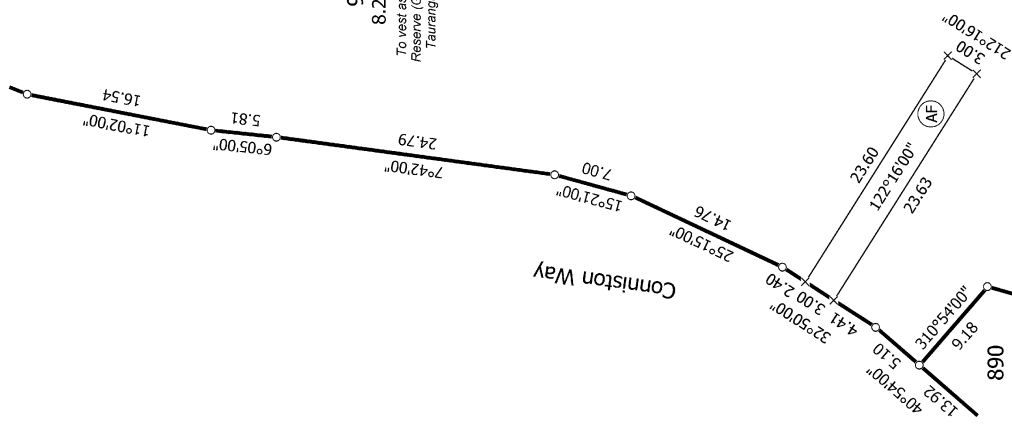
Diag. L

Diag. B
See T10



933
8.2307Ha
To vest as Local Purpose Reserve (Green Belt) in the Tauranga City Council.

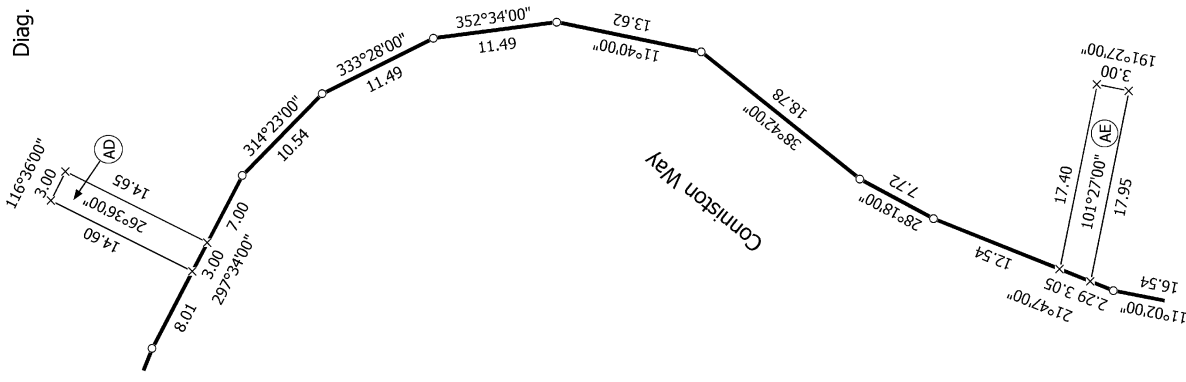
Diag. C



933
8.2307Ha
To vest as Local Purpose Reserve (Green Belt) in the Tauranga City Council.

890

Diag. E



933
8.2307Ha
To vest as Local Purpose Reserve (Green Belt) in the Tauranga City Council.



Diag. D

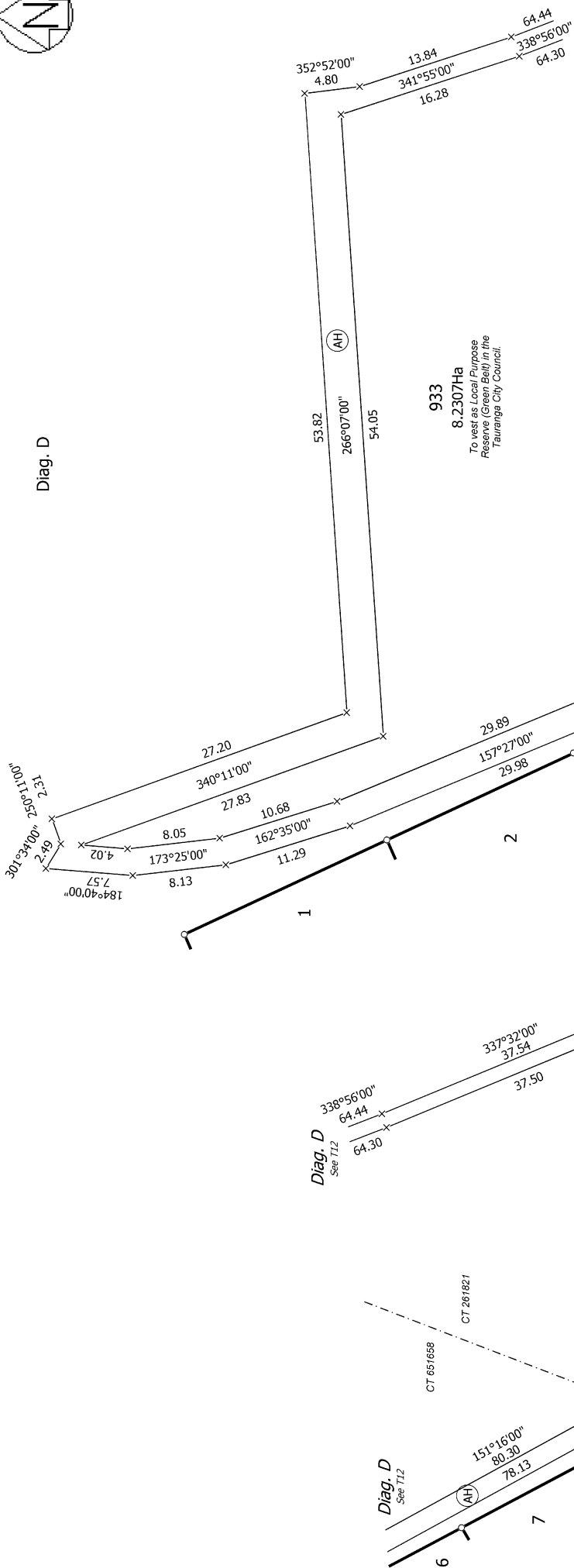
Diag. G
See T12

Diag. G
See T12

Diag. FA
See T3

Diag. D
See T12

Diag. G



933
8.2307Ha
To vest as Local Purpose Reserve (Green Belt) in the Tauranga City Council.

933
8.2307Ha
To vest as Local Purpose Reserve (Green Belt) in the Tauranga City Council.

T 12/13

Land District: South Auckland

Digitally Generated Plan

Generated on: 16/06/2015 11:21:am Page 21 of 22

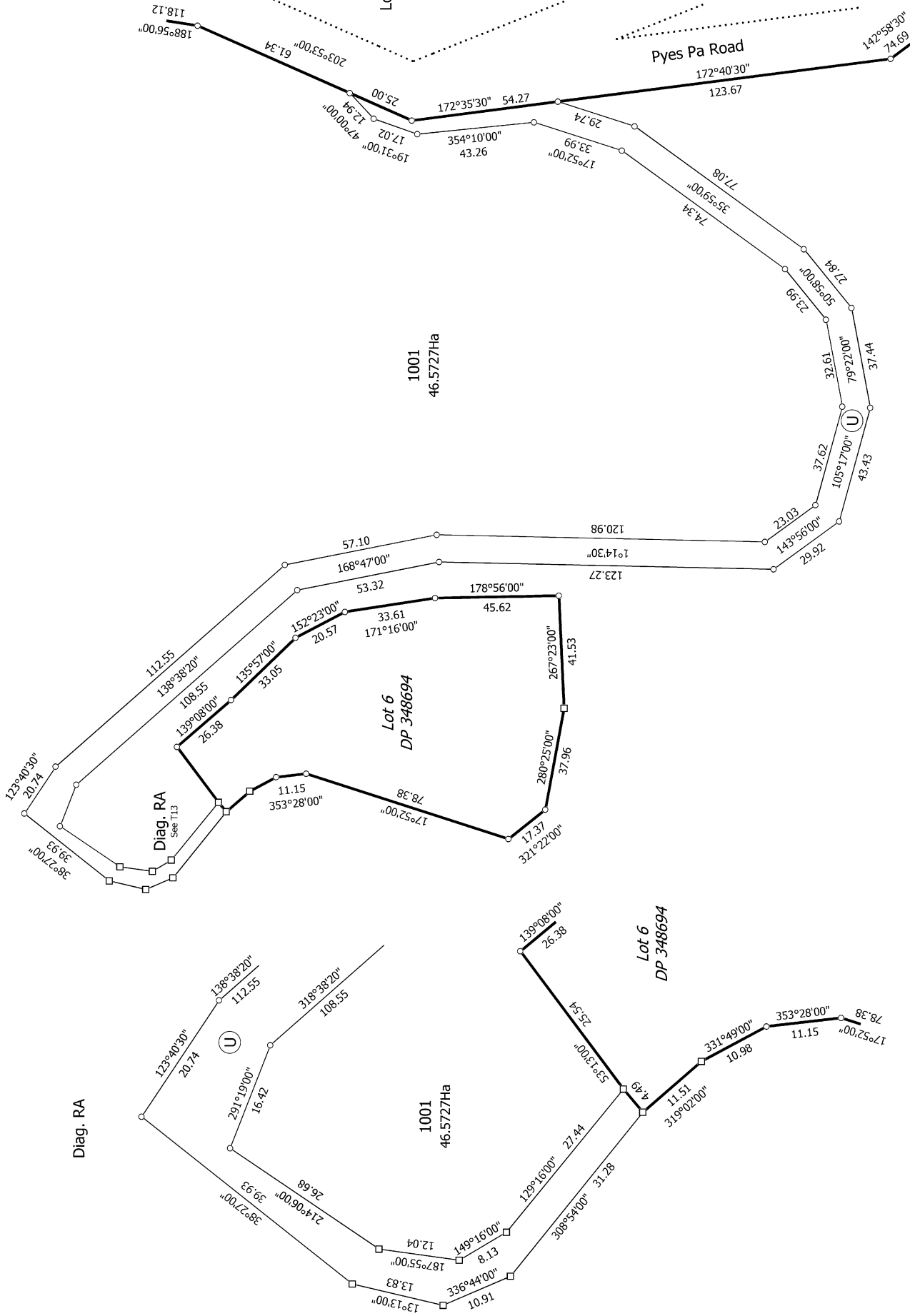
Lots 1-103, 107-147, 890, 903-904, 933-936, 966 & 1001 being a subdivision of Pt Lot 11 DP 364444 & Lot 2 DP 474511

Surveyor: Michael Peter Dewhurst
Firm: Harrison Grierson Consultants Ltd

Title Plan
LT 486181
Approved on: 16/06/2015



Diag. R



T 13/13

Lots 1-103, 107-147, 890, 903-904, 933-936, 966 & 1001 being a subdivision of Pt Lot 11 DP 364444 & Lot 2 DP 474511

Surveyor: Michael Peter Dewhirst
 Firm: Harrison Grierson Consultants Ltd

**Title Plan
 LT 486181**
 Approved on: 16/06/2015